



Confidential

Fortex WebTrader (MT) User Manual

Document version 1.0

Date: March 06, 2015

Fortex, Inc.
203 Redwood Shores Parkway, Suite 640
Redwood Shores, CA 94065



Disclaimer

Copyright ©2015 Fortex, Inc. All rights reserved.

The content of this document is proprietary and confidential for internal use only. Any use, disclosure, possession, reproduction, and distribution of it or any action taken or omitted to be taken in reliance on it without Fortex's written authorization, is strictly prohibited and is unlawful. If you are not the intended recipient, please return this document to Fortex immediately.

Revision Record		
Date	Description	Version
March, 2015	Initial Release	1.0

1 LOGIN/LOGOUT	6
1.1 LOGIN.....	6
1.2 LOGOUT	7
2 DIFFERENT USER TYPES	8
2.1 REGULAR USER.....	8
2.2 FREE DEMO USER.....	8
3 MARKET WATCH.....	9
3.1 THE MARKET WATCH PANEL'S ICON SUMMARY:	9
3.2 FUNCTION DESCRIPTION	9
3.2.1 <i>Symbol Sort</i>	9
3.2.2 <i>Market Watch symbol contract description</i>	10
3.2.3 <i>Market Watch symbol expand description</i>	10
4. DASH BOARD.....	12
4.1 TO ADD A SYMBOL.....	12
4.2 TO DELETE A SYMBOL	12
4.3 TRADE.....	12
5 ADVANCED ORDERS.....	13
5.1 OPEN MODE	13
5.2 ORDER TYPE	13
5.2.1 <i>Market/Instant Execution Order (IE)</i>	13
5.2.2 <i>Limit Order</i>	14
5.2.3 <i>Stop Order</i>	15
6. TRADE	16
6.1 ORDERS.....	16
6.1.1 <i>Closing an Order:</i>	17
6.1.2 <i>Modify Order:</i>	18
6.1.3 <i>Delete Order</i>	18
7 HISTORY.....	19
8. CHART	20
8.1 TIME INTERVAL.....	20
8.2 CHART TYPE	20
8.3 OVERLAY.....	20
8.4 INDICATORS AND STUDIES.....	20
8.5. COLOR	21

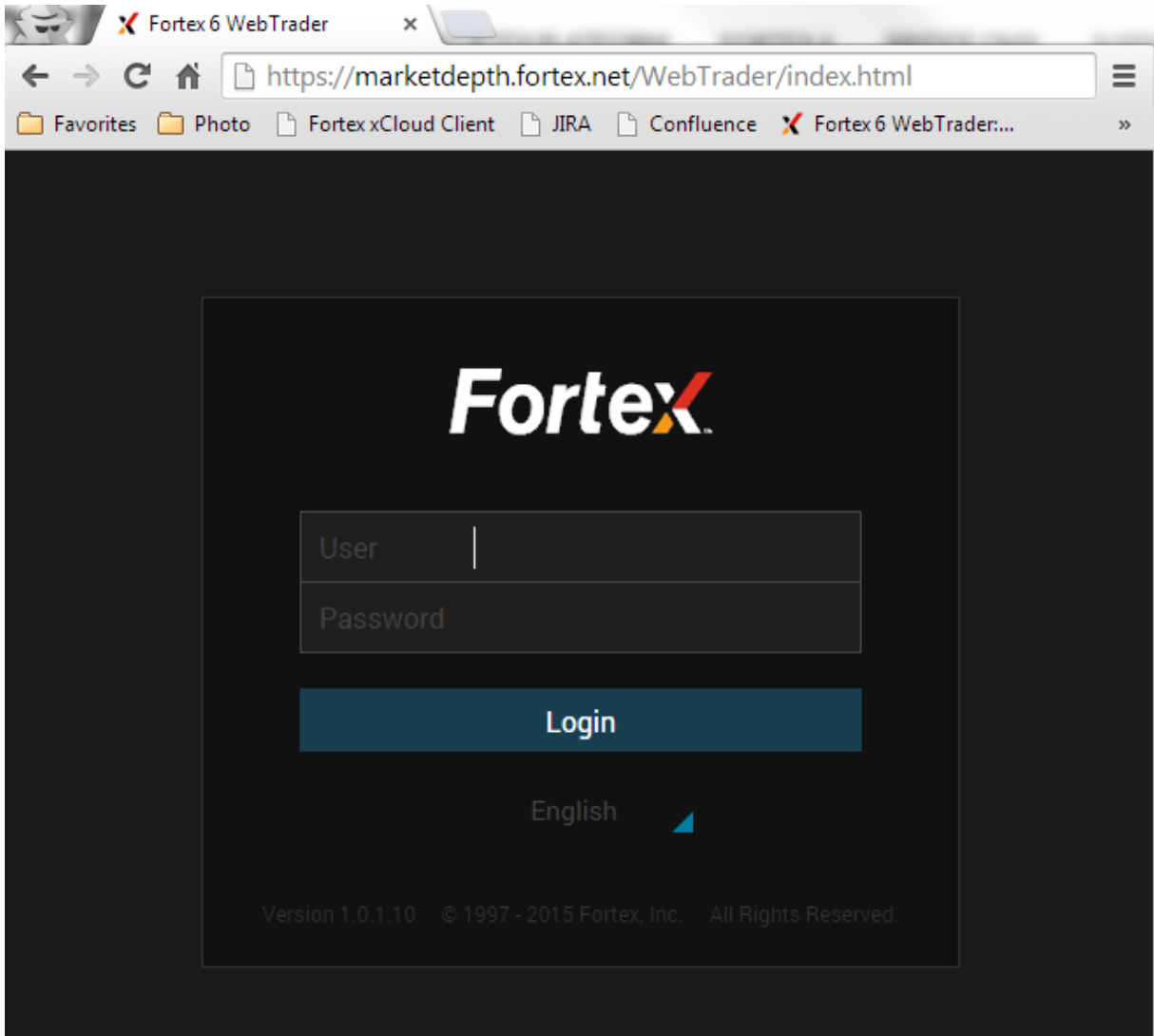


8.6 RESET.....	21
8.7 TRADE TAB.....	21
8.8 RIGHT SIDE TOOL BAR	21
9 JOURNAL.....	22
10 STATUS BAR.....	23
10.1 CONNECTION STATUS.....	23
10.2 TIME.....	23
11 USER SETTING.....	24

1 Login/Logout

1.1 Login


Step1: Open a browser and enter the URL given by your service provider.



Step 2: Enter the user ID and Password given by your service provider. Click "Login".

- The User name is the MT account. Password is case sensitive.
- The default language in Web Trader is the browser's default language. A user can select a different language and the selection will be saved for future Logins. Supports multiple logins using the same account at the same time.

1.2 Logout

- To logout, click  at the upper right corner and select Logout.
- Close the browser.

2 Different User Types

2.1 Regular User

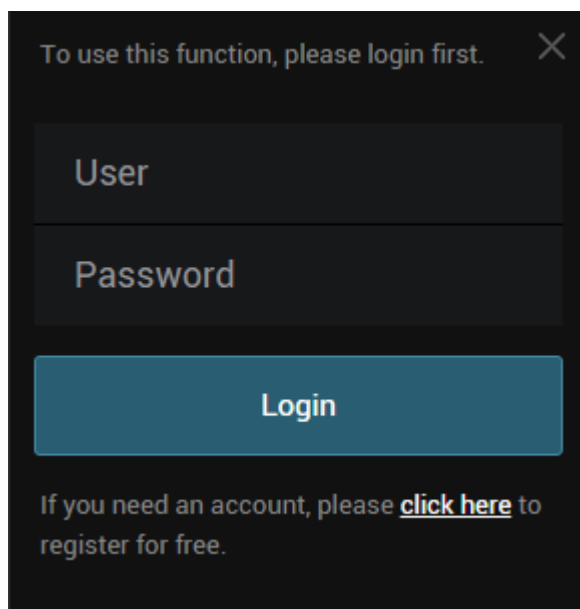
The user permission references the MT account. Login is required.

2.2 Free Demo User

If the server has Free Demo enabled, a client does not need to login. The client can use all the functions except trading.

If the client attempts to trade, the Login dialog will popup.

Client can click the “click here” link to create a demo account.









A dark-themed login dialog box with a close button (X) in the top right corner. The text inside reads: "To use this function, please login first." Below this are two input fields labeled "User" and "Password". A teal "Login" button is positioned below the fields. At the bottom, there is a line of text: "If you need an account, please [click here](#) to register for free."

3 Market Watch

The securities (symbols) that are streamed from the server to the Client Terminal are listed in the "Market Watch" window. They are arranged by securities types then ordered by symbol name. Users can view the symbol trends, pips, and price changes.

This window allows the user to place market orders, open new charts, open Advanced Order and add symbols to the Dashboard.

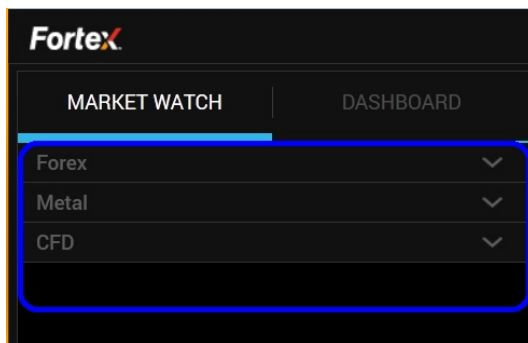
3.1 The Market Watch panel's icon summary:

-  **Advanced order:** Click this button to open the Advanced Order window.
-  **Chart:** Click this button to open a new chart.
-  **Dashboard:** Click this button to add the desired symbol to Dashboard.
-  **More:** This function is disabled.
-  Expand the symbol group.
-  Minimize the symbol group.

3.2 Function description

3.2.1 Symbol Sort

This will be grouped by securities name and ordered by symbol name.

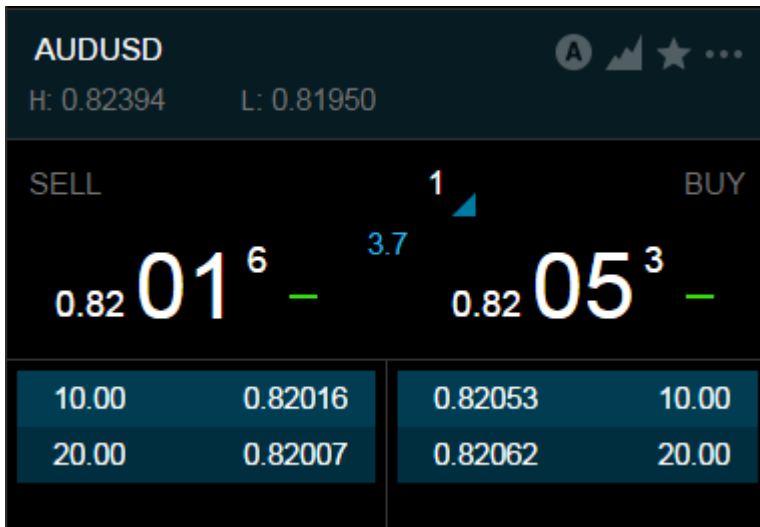




3.2.2. Market Watch symbol contract description

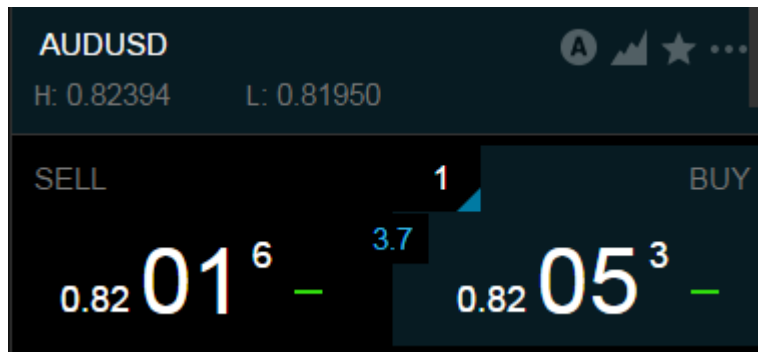
User can view the symbol, real-time quote and price change.

3.2.3. Market Watch symbol expand description

Click the symbol, and the symbol will be expanded to show more info:






- The buttons:  on the upper right corner are used to connect to other panels (Reference 3.1). Values of the "H" and "L" fields are calculated on the basis of price changes within a day.
- The pip value is the values of bid minus ask.
- Users can change the order size by  (one unit is defined as one lot).
- Hover the mouse over the Sell or Buy price and the price pane will be highlighted. Click the price to place a market order directly.



- The Market Depth "Bid", "Ask", and "lot" show the corresponding prices and lots received from the price server.





- The Market Depth quote is sorted as follows:
 - “Sell” (bid) is sorted from large to small; descending sort.
 - ”Buy” (ask) is sorted from small to large; ascending sort.
- In the first line of the Market Depth price list is the L1 quotation.
- Market watch can only expand one symbol at a time. If the user chooses to expand another symbol, the previously expanded symbol will be minimized.
- Tick Trend:
 - (1). Current quote > Last quote, Trend up,  green up arrow is displayed.
 - (2). Current quote < Last quote, Trend down,  red down arrow to displayed.
 - (3). Current quote = Last quote, Trend is flat,  green line displayed




4. Dash Board

This window shows symbols that are saved for frequent use.

4.1 To add a symbol

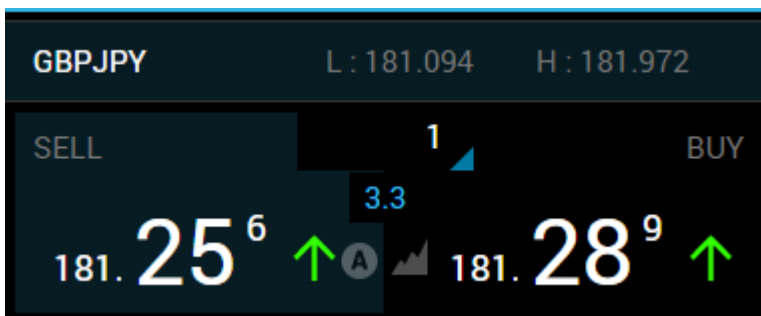
Open the Market Watch panel, choose a desired symbol, and click . The icon will become , and the symbol will have been successfully added to the Dashboard panel.

4.2 To delete a symbol

- Open the Dashboard panel, click  to remove the selected symbol from the Dashboard panel.
- Open the Market Watch panel, choose a desired symbol, and click . The icon will become , and the symbol will be removed from the Dashboard panel.

4.3 Trade


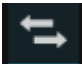
- On the Dashboard panel, the user can click right on the price to place a market order directly.



- Click on the symbol, and the symbol will be expanded to show more info, including the Market Depth (Reference 3.2.3).

5 Advanced Orders

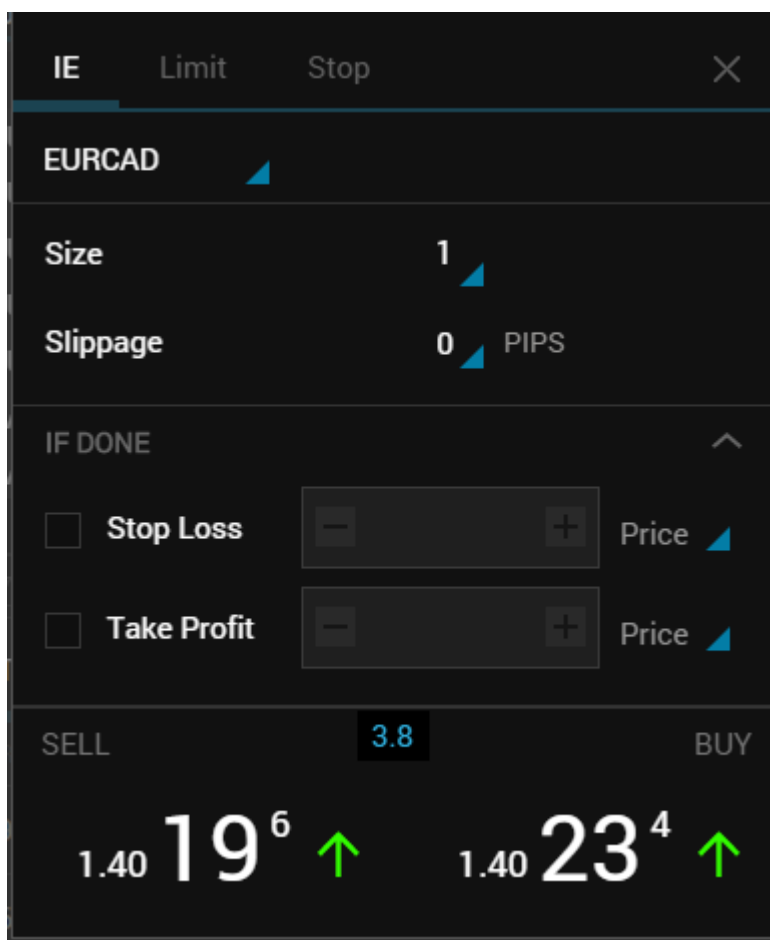
5.1 Open Mode

- Click  on the Market Watch or the Dashboard panel to open the Advanced Orders panel.
- Alternatively the user can click  at the upper right corner to open Menu selection and then select “Advanced Orders” to open the Advanced Orders panel.

5.2 Order Type

5.2.1 Market/Instant Execution Order (IE)

Two execution types are supported: Market or Instant Execution (IE). When the Advanced Orders panel is opened, the first line along the top will show the option for Execution Type. It is either Market or IE.



Description:

- **Market:** In this order execution mode, the order is executed at the prevailing available market price when the order is received. The actual execution price may be different than the price shown at the Price panel at the moment the order is entered.
- **IE:** In this mode, the order is executed at the price entered by the user. If the broker cannot execute the price as entered, the so-called "Requote" will occur: Broker returns prices at which the order can be executed.
- **Request:** This execution Type is not supported. When a symbol is set to Request Mode, all orders will be rejected.
- **Symbol:** All MT server supported symbols.
- **Size:** The default value is 1. (one unit is defined as one lot).
- **Note:** If the input value is not in the MT server setting range. The system will display a corresponding alert message.
- **Slippage:** Only enabled for IE execution..
- **IF DONE:** Default expand.
- **Stop Loss:** SL is used for minimizing losses if the security price has started to move in an unprofitable direction. If the security price reaches this level, the position will be closed automatically. Such order is always connected to an open position or a pending order. The brokerage company can place them only together with a market or a pending order. The terminal checks long positions with the BID price for meeting of this order provisions, and it checks the ASK price for short positions.
- **Take Profit:** TP is intended for gaining the profit when the security price has reached a certain level. Execution of this order results in closing of the position. It is always connected to an open position or a pending order. The order can be requested only together with a market or a pending order. Terminal checks long positions with the BID price for meeting of this order provisions, and it checks the ASK price for short positions.
- **Sell:** This is to Sell at the market price. Click on the SELL area to place a sell order.
- **Buy:** This is to Buy at the market price. Click on the BUY area to place a buy order.
- **Spread:** Ask price (buy)- Bid Price (sell).

5.2.2 Limit Order

- **Sell Limit:** sell provided the future "BID" price is equal to the pre-defined value. The current price level is lower than the value of the placed order. Orders of this type are usually placed in anticipation that the security price will increase after having fallen to a certain level.
- **Buy Limit:** buy provided the future "ASK" price is equal to the pre-defined value. The current price level is higher than the value of the placed order. Orders of this type are



usually placed in anticipation that the security price will fall after having increased to a certain level.

- **Description:** For the Limit tab page description please read Reference 5.2.1.

5.2.3 Stop Order

- **Sell Stop:** sell provided the future "BID" price is equal to the pre-defined value. The current price level is higher than the value of the placed order. Orders of this type are usually placed in anticipation that the security price will keep on falling after having reached a certain level.
- **Buy Stop:** buy provided the future "ASK" price is equal to the pre-defined value. The current price level is lower than the value of the placed order. Orders of this type are usually placed in anticipation that the security price will keep on increasing after having reached a certain level.
- **Description:** For the Stop tab page description please read Reference 5.2.1.

6. Trade

The "Trade" panel contains information about the current status of the trading account, about open positions and pending orders placed. All positions are sorted by time.

1.1 All filed Description:


Tab	Description
Order	The operation ticket number
Time	The time of when the position is opened
TYPE	The trade operation type: Buy/Sell, Buy/Sell Stop, Buy/Sell Limit
SIZE	The amount in lots participated in the operation
SYMBOL	This field shows the name of the security participated in the operation
Open Price	The price of the position when it is opened
S/L	The level of the Stop Loss order placed
T/P	The level of the Take Profit order placed.
Time	The time when the position is closed
Quote	The market price
Commission	The commissions charged by the broker when the trade operations are performed.
SWAP	The swaps charged
PROFIT	The financial result of a transaction
Balance	
Equity	Equity=Balance + Credit + profit + Open swap + commission
Margin	Total margin required of all positions
Free margin	Free Margin=Equity-Margin
Margin Level	In percent: Margin Level=Equity/Margin *100% In money: Margin Level=Equity
Profit	Total profit of all positions

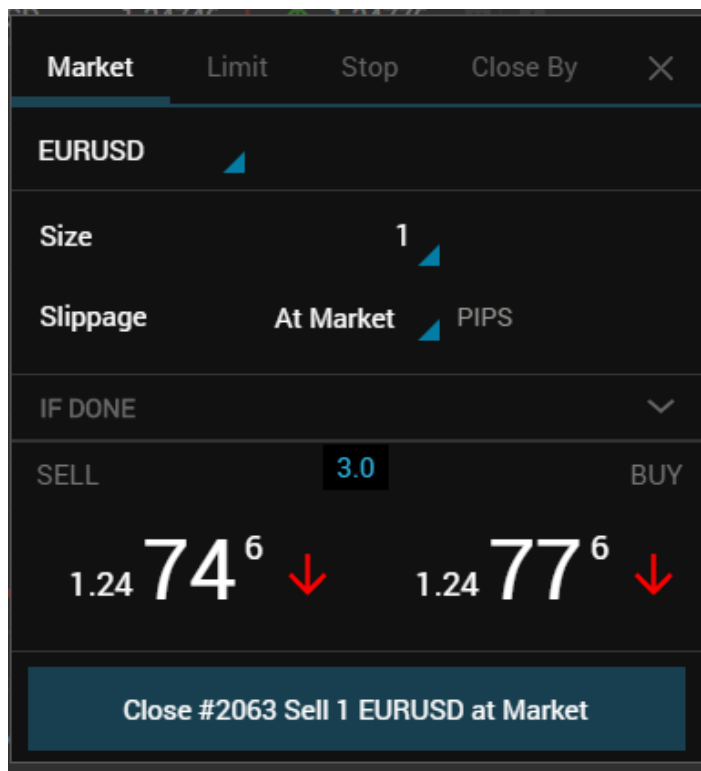
6.1 Orders


The "Trade" panel contains information about the current status of the trading account, about open Buy/Sell orders (positions), pending orders, and placed trades. An user can perform operation on open orders and pending orders:

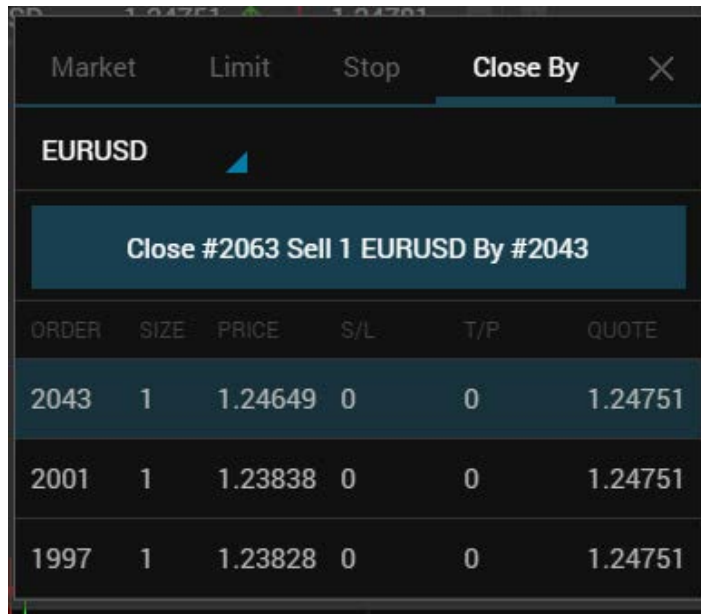
6.1.1 Closing an Order:

- Close (using a market or IE order):

Select a buy or sell order from the Trade Panel and click  to close the selected order.



- Close By (using another open order of opposite side):
Select a buy or sell order from the Trade Panel and click . Select the “Close By” tab. The UI shows all the open orders with the opposite side towards the order selected. Select an order from the list, the Close By button will be activated. Click the Close By button to close the original order and the selected order. A new open order will be created for the residual amount if the two orders don’t have the same amount.




6.1.2 Modify Order:

Modify the “SL” and “TP” value. If the stop loss and take profit level of the specified order is too close to the current price, an error message will popup and the SL/TP will not be placed.

Note:

For a Pending order (Limit and Stop order), the open price can also be modified.

6.1.3. Delete Order

To delete a pending order, select a pending order and Click .

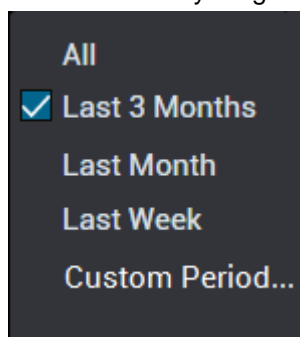
7 History

Description:

Tab	Description
Order	The operation ticket number
Time	The time when the position is opened
TYPE	The trade operation type: Buy/Sell, Buy/Sell Limit, Buy/Sell Stop
SIZE	The amount in lots participated in the operation
SYMBOL	The name of the security participated in the operation
Open Price	The price at which the position is opened
S/L	The level of the Stop Loss order is placed at
T/P	The level of the Take Profit order is placed at
Time	The time of when the position closed
Close Price	The price at which the position closed at
Commission	The commission charged to the trade operations
SWAP	The swaps charged
PROFIT	The financial result of the transaction
Profit/Loss	Total profit for all the closed orders in the history range
Credit	User credit
Deposit	The amount a user has deposited
Withdrawal	The amount a users have withdrawn.

History Range:

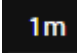
User can select the history range from the right click menu:




- All: shows the entire account history
- Last 3 Months: shows the account history of the last 3 months
- Last Month: shows the account history of last month
- Last Week: shows the account history of last week
- Custom Period: show the account history of the date range entered by the user (disable now)




8. Chart

8.1 Time Interval


Eight periods are available, from a minute to a month. Click the  to open the sub-menu to manage the chart period. When a period is selected in this sub-menu, the corresponding changes will appear in the active chart.

8.2 Chart Type

Click the  to open the sub-menu to choose from the three chart types.

Sub-Menu		Description
Bar Chart		Display the chart as a sequence of bars.
Line Chart		Display the chart as a broken line.
Candle stick		Display the chart as a sequence of candlesticks.

8.3 Overlay


Click the  to open the sub-menu to choose from the four overlay types.

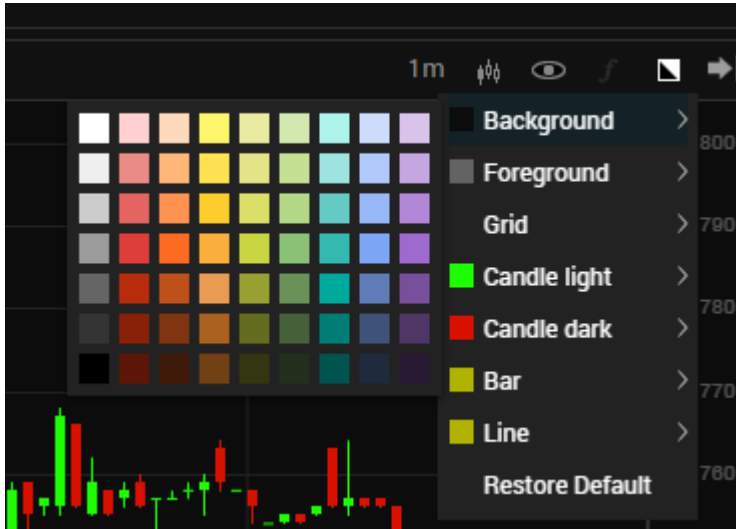
Sub-Menu	Description
Current Tick Line	The current bid price
Market order Line	Open Orders's price.
Pending Order Line	Pending Orders's price.
Execution	The Buy/Sell Orders' price.

8.4 Indicators and Studies


The indicators and studies  function is disabled now.

8.5. Color

Click  button to open the color sub-menu to customize the color for the Chart area by clicking on the category and then selecting the color.

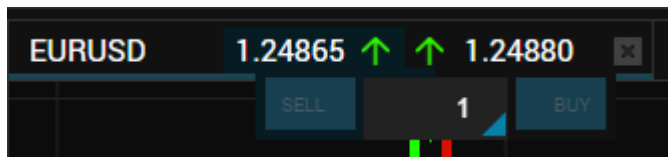


8.6 Reset

When a Chart is scrolled to the left area, the Rest button  will show up on the lower right corner. Clicking it will cause the chart to scroll to the latest bar to the right.

8.7 Trade Tab

A user can place market orders on this panel.



8.8 Right side tool bar

Coming soon.



9 Journal

After login, the Journal will record all the user's actions

10 Status bar

10.1 Connection status

If WebTrader loses connection to the server, the connection status icons become gray.



If WebTrader is connected to the server, the connection status icons are green.




10.2 Time

Server Time: The MT server time.

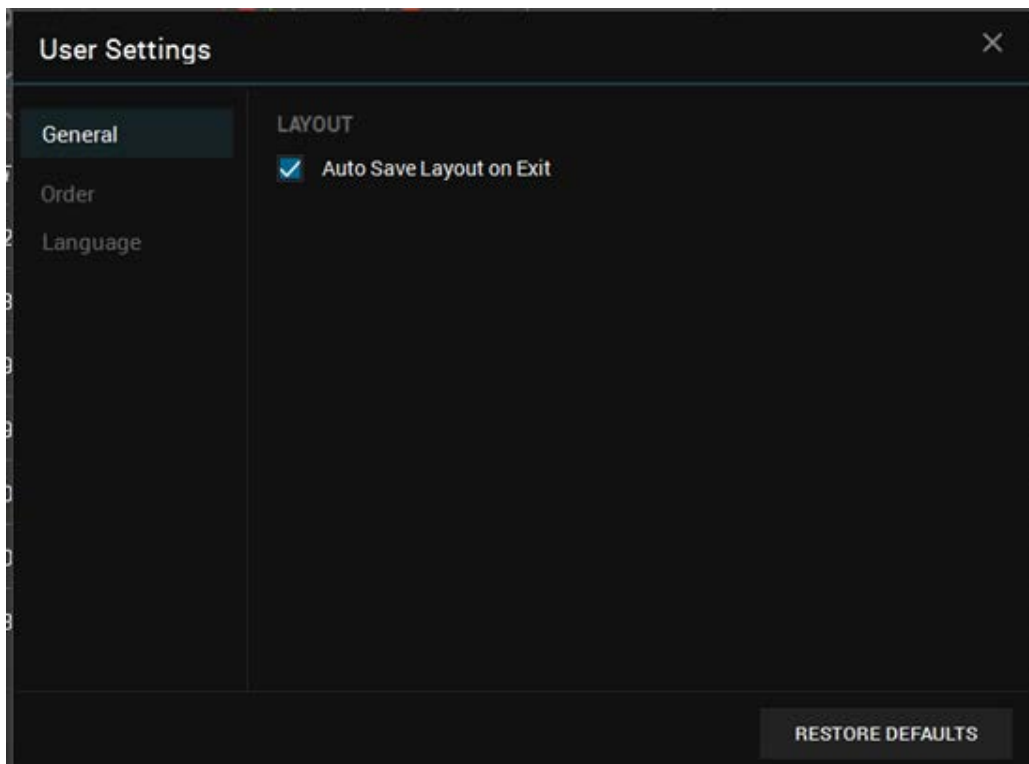
Local Time: The system local time.

11 User Setting

Click the upper right corner  to open the menu and select “Setting” to open the User setting panel. The user setting panel has three tabs:

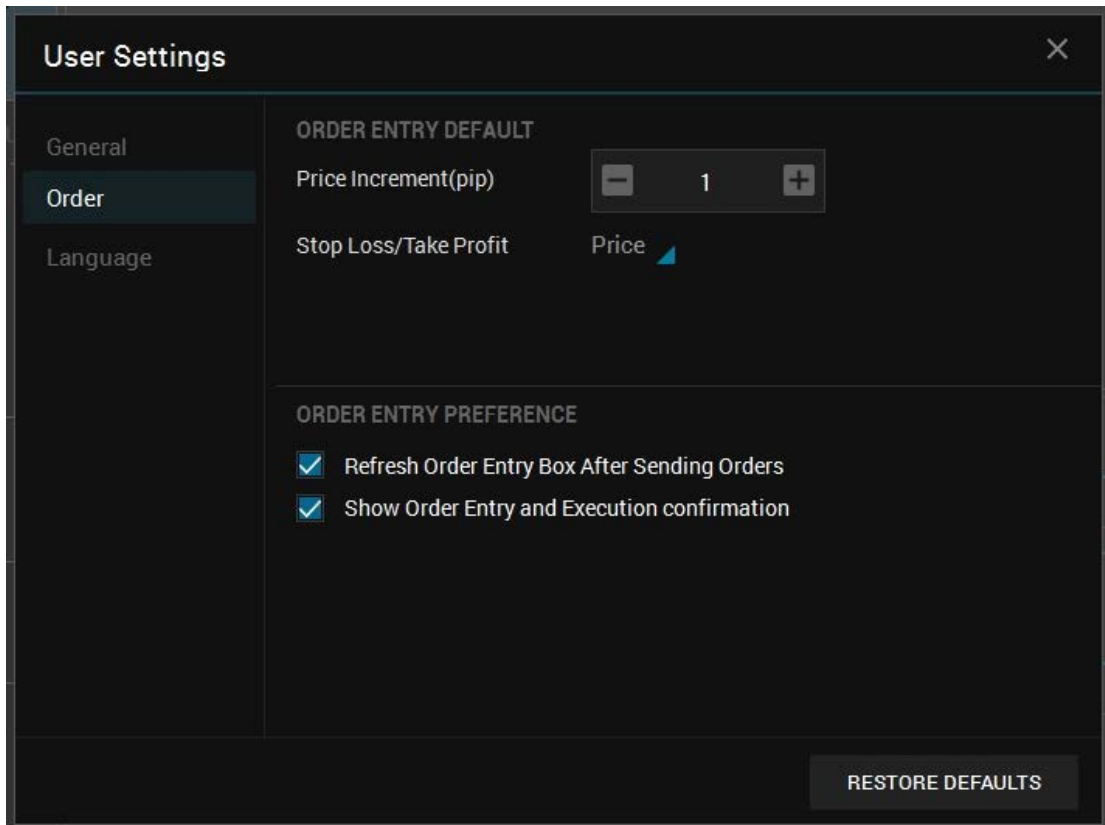
General:

- **Layout:** Disable/enable auto save layout on exit.



Order:

- **Refresh Order entry box after sending orders:** After placing order, the order info will return to the default value.
- **Show order entry confirmation:** Show order entry and execution confirmation.
- **Price Increment (Pip):** This setting will affect the limit price, stop price, stop loss, and take profit on the Advance Order panel.



Language:

- **Language:** Select the default language. Currently supports English and simplified Chinese only.

